



## Course Outline

# MapInfo Professional Fundamentals - 2 days

MapInfo Professional is the industry standard for Geographically displaying your data. As long as you have some criteria that can be used to locate each record (i.e. coordinates, postcode, county, etc) then the data can be used and the results analysed.

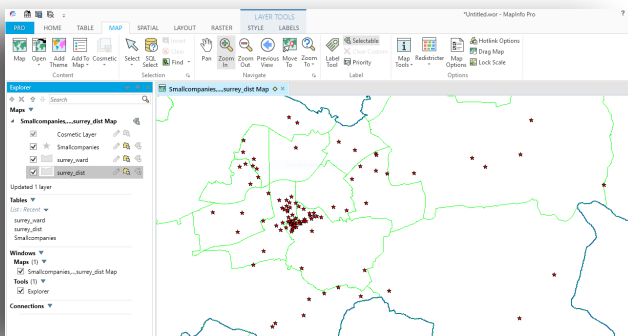
If you are looking for patterns in crime stats, or for different transportation methods people use getting to work, or any other locational analysis, then MapInfo Professional is the tool for you.

What we can do is show you how to get the most out of the tool you have bought. We train on ALL versions and have the UK's leading MapInfo Professional expert as our trainer. Other training companies sub-contract us to do their training...come direct and cut out the middle-man.

### Contents

#### Displaying MapInfo Data

- Basic concepts to using MapInfo
- Opening MapInfo tables
- Viewing data in a Map, Browser Graph windows
- Working with subset of a table

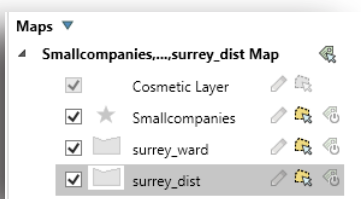


#### Developing Map Window Skills

- Basic concepts to working with Map windows
- Zooming in and zooming out
- Panning the map to change what area you are looking at
- Viewing multiple map windows at once
- Using workspaces to save your maps

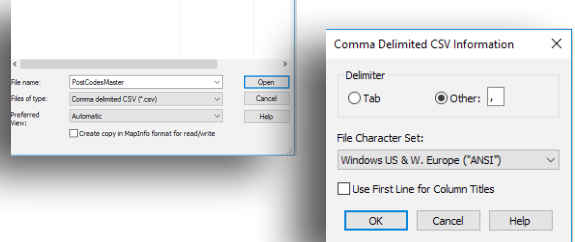
#### Mapping in Layers

- Using MapInfo Layer Control features
- Setting and changing the colours and styles of your map
- Adding, removing and reordering layers in a Map window



#### Selecting from a Map

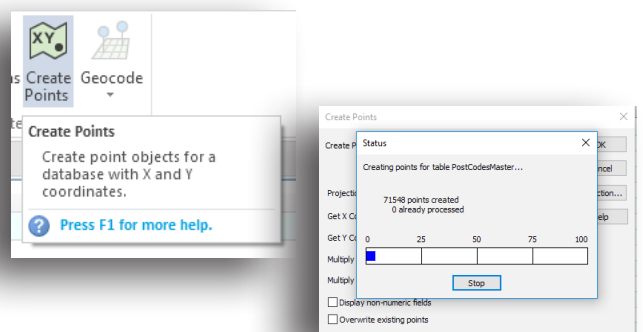
- Using the select tools to make selections
- Selecting objects within a radius, rectangle, region or custom polygon
- Viewing the selected data in a Browser window
- Using the statistics window to analyse the selection
- Reversing or inverting a selection



#### Opening your Data Files in MapInfo

- How to open common data file formats including:
- MS Access tables
- Spreadsheet files
- DBF files
- Delimited ASCII files

#### Using MapInfo Create Points command to get your data on to a map



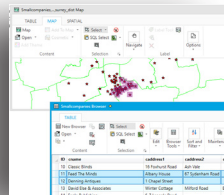


## Understanding and using British National Grid coordinates

Understanding Longitude / Latitude coordinates

## Using the Query > Select Command

Using the Query > Select command to filter your tables for data that meets a certain condition



## Getting Your Data On a Map: Geocoding

Using Postcodes to plot your data on a map  
Automatic and Interactive Geocoding

_COL1	_COL2	_COL3	_COL4	_COL5	_COL6	_COL7
AB101AB	10	394,235	806,529	S92000003		50
AB101AF	10	394,181	806,429	S92000003		50
AB101AG	10	394,230	806,469	S92000003		50
AB101AH	10	394,371	806,359	S92000003		50
AB101AL	10	394,326	806,522	S92000003		50
AB101AN	10	394,367	806,541	S92000003		50

records 1 - 24 of 1691721

## Creating Thematic Maps

Colouring maps according to associated data

Ranged maps

Individual value maps

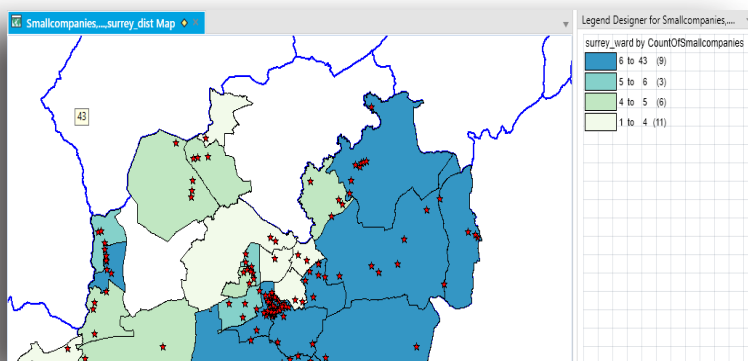
Graduated symbol maps

Explore various options for each of the types of thematic map created

Joining tables

Customise legends of thematic maps

Save thematic templates to produce different maps using the same settings



## Labelling

Manually creating and editing labels using the label tool

Automatically labelling an entire layer

Controlling label options for an entire layer

Changing the data column used for labels

Adding annotations on to a map

Creating Hardcopy Output Using The Layout Window

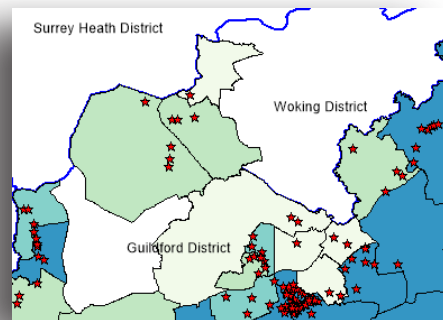
Using the layout window to create hardcopy output

Placing multiple maps, browsers, legend windows or

other windows on a page in preparation of printing

Work with Frame Objects

Add your own logos and graphics to your Layout window



## Creating Output: Placing Maps in Other Applications

Place maps from MapInfo into other software

Save a window as a bitmap to be used in another software package

## Concluding Remarks